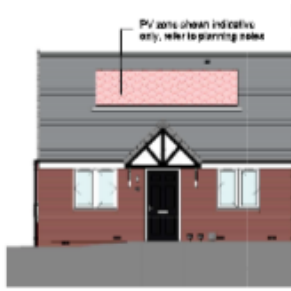


Appendix H – Selection of House Types - Bungalow and Three Storey (Affordable)



Front Elevation.  
1:100



Left Elevation.  
1:100



Rear Elevation.  
1:100



Ground Floor

NDSS Bedroom Schedule		
Name	Area	NDSS Minimum
Bed 1	12.47 m <sup>2</sup>	11.5m <sup>2</sup>
Bed 2	7.65 m <sup>2</sup>	7.5m <sup>2</sup>

NDSS Store Schedule	
Name	Area
St	2.12 m <sup>2</sup>
	2.12 m <sup>2</sup>

Total floor areas taken above eading height.  
NDSS rules - Any storage area with less than 0.9m headroom is discounted and areas with a headroom between 0.9-1.5m are subject to a 50% reduction.

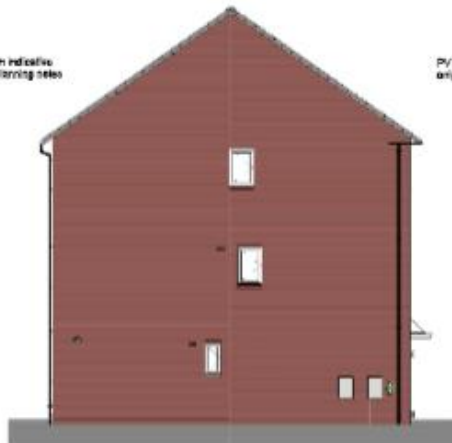
With these rules applied to this type, the NDSS store areas are:

Ground Floor	2.12m <sup>2</sup>
Total	2.12m <sup>2</sup>

NDSS Minimum storage area for 1 storey



Front Elevation.  
1:100



Left Elevation.  
1:100



Rear Elevation.  
1:100



Ground Floor.  
1:100



First Floor.  
1:100



Second Floor.  
1:100

NDSS Bedroom Schedule		
Name	Area	NDSS Minimum
Bed 1	13.45 m <sup>2</sup>	11.5m <sup>2</sup>
Bed 2	14.71 m <sup>2</sup>	11.5m <sup>2</sup>
Bed 3	13.33 m <sup>2</sup>	11.5m <sup>2</sup>
Bed 4	8.93 m <sup>2</sup>	7.5m <sup>2</sup>

Total floor areas taken above eading height.  
NDSS rules only allow a 1m<sup>2</sup> for under stair space. For stairs storage, any area with less than 0.9m headroom is discounted and areas with a headroom between 0.9-1.5m are subject to a 50% reduction.

With these rules applied to this type, the NDSS store areas are:

Under stair part of GF above 1.05m	0.43m <sup>2</sup>
Full height part of GF above 1.05m	0.43m <sup>2</sup>
First Floor	0.43m <sup>2</sup>
First Floor	0.77m <sup>2</sup>
Total	3.14m <sup>2</sup>

NDSS Minimum Storage area for 3 storey  
4875 equals 3m<sup>2</sup>